

Survey Results - Week Commencing 22nd June 2020

- * Results are based on a sample of LAs taken in the W/C 22nd June 2020. The sample size varies each week and these results should be used as a general indication of levels and trends.
- * Responses represent best reasonable estimates at the date and time the survey is completed, and for some Local Authorities (LAs), may be reported with a week's lag.
- * Although this document is not in itself an official statistics release, it and the indicators within it, have undergone a proportionate level of quality assurance.
- * Percentages throughout this document may not sum to totals due to rounding

Collection Services



*Axis dates given as 'week commencing...'

- **Residual waste:** The vast majority (**90%**) of Waste Collection Authorities/Unitary Authorities (WCAs/UAs) responding to our survey in the W/C 22nd June 2020 and who provide residual waste collections, report these to be operating as normal. Most of the remainder reported experiencing minor disruption.

- **Recycling:** Almost four in five (**79%**) recycling collections are reported to be operating as normal in the W/C 22nd June, while minor disruption is reported by **18%** of responding authorities, with just **3%** reporting moderate disruption.
- **Food waste:** Over four in five (**83%**) of LAs responding to our survey in the W/C 22nd June who provide food waste collections, report these to be operating as normal. **12%** of responding authorities continue to report some level of disruption, with **3%** of responding authorities reporting that the service is currently not available.
- **Garden waste:** Over four in five (**82%**) garden waste collection services are reported to be operating as normal in the W/C 22nd June, with this figure higher than the previous two weeks. A further **13%** report garden waste collection services to have minor disruptions.
- **Clinical waste:** Almost all (**98%**) clinical waste collections (generally ran in over four fifths of LAs represented in this survey) are reported to be continuing to operate as normal.
- **Commercial waste:** **65%** of LAs responding to our survey in the W/C 22nd June report commercial collection services to be operating normally, a slight decrease on the previous week, with another **14%** reporting operating with minor disruption. The rest of LAs responding in W/C 22nd June are operating with a moderate disruption.
- **Bulky collections:** The overall situation for bulky collections has improved incrementally since the end of March. **3%** of bulky collections are reported to be unavailable in the W/C 22nd June, similar to the results in W/C 15th June. The percentage of collections reported to be operating normally is **70%** in the W/C 22nd June.
- **Street sweepings:** Four in five (**80%**) street-sweeping and litter collection services provided by responding LAs are reported to be operating normally. **18%** are reported to be experiencing minor disruption.
- **70% of bring banks** are reported to be operating normally in the W/C 22nd June by responding LAs. **18%** report this service to be experiencing minor disruption and **11%**, moderate disruption. **1%** report this service to be not available.
- The vast majority (**89%**) of **fly-tipping clearance** collections are reported to be operating as normal in the W/C 22nd June. **9%** are reported to be in operation but with minor disruption.

	Operating normally	Minor disruption	Moderate disruption	Severe disruption	Service not available
Residual	90%	9%	1%	0%	0%
Recycling	79%	18%	3%	0%	1%

Food	83%	12%	1%	0%	3%
Garden	82%	13%	4%	1%	0%
Clinical	98%	2%	0%	0%	1%
Commercial	65%	14%	22%	0%	0%
Bulky	70%	19%	9%	0%	3%
Bring Banks	70%	18%	11%	0%	1%
Fly-Tip Clearance	89%	9%	2%	0%	0%
Street Sweeping	80%	18%	2%	1%	0%

Disposal Services

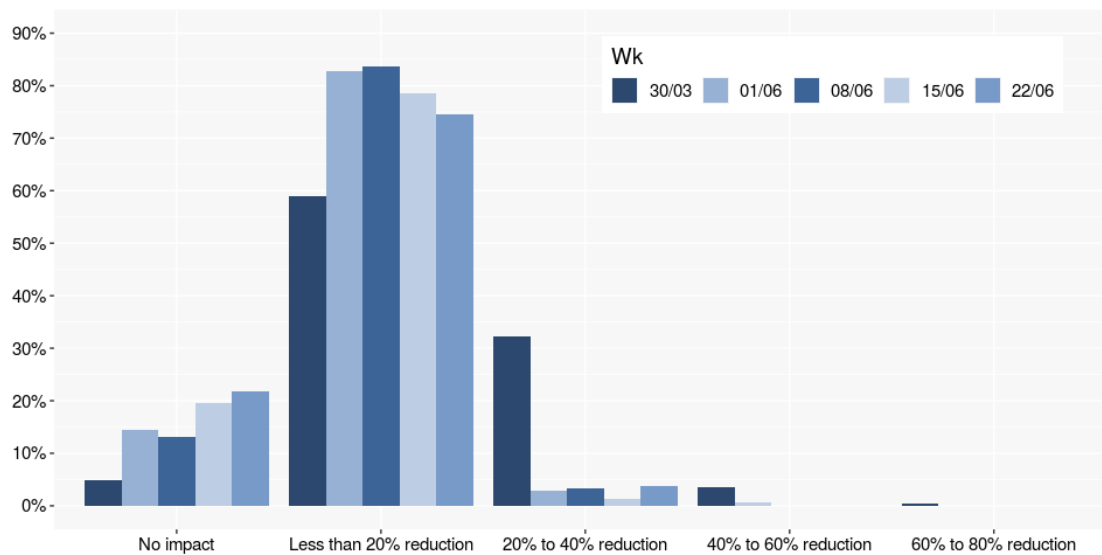


- Nearly all landfilling and Energy from Waste (EfW) disposal services utilised by LAs responding to our survey are reported to be operating as normal in the W/C 22nd June 2020. This has been a relatively constant picture since the W/C 30th March.
- Material Recycling Facilities (MRFs):** Greater levels of disruption have been consistently reported for recycling disposal services than residual by survey respondents, and this trend continues to be the case in the W/C 22nd June. The vast majority of (84%) MRF services used by LAs responding to our survey are reported to be operating as normal, while 14% are reported to be operating but with minor disruption.
- Transfer stations:** As in previous weeks, most transfer stations (94%) are reported to be continuing to operate without any disruption by LAs responding to our survey in the W/C 22nd June.
- Household Waste Recycling Centres (HWRCs):** In the W/C 22nd June, three in four (75%) responding LAs report minor or moderate levels of disruption among HWRCs that are in operation.

- **Mechanical Biological Treatment (MBT):** MBT services are reported to be in normal operation for almost all (**93%**) of the relatively small proportion of responding authorities where this is a disposal service (just over a quarter). The remainder report experiencing minor disruption.
- **Open Windrow Composting (OWC):** OWC services are reported to be operating as normal by **95%** of responding LAs this week.
- All (**100%**) **In-Vessel Composting (IVC)** and **Anaerobic Digestion (AD)** services are reported to be operating as normal by LAs responding to our survey in the W/C 22nd June.

	Operating normally	Minor disruption	Moderate disruption	Severe disruption	Service not available
Landfill	100%	0%	0%	0%	0%
EFW	97%	3%	0%	0%	0%
MRF	84%	14%	2%	0%	0%
HWRC	23%	50%	25%	2%	0%
Transfer Stations	94%	4%	2%	0%	0%
MBT	93%	7%	0%	0%	0%
OWC	95%	4%	1%	0%	0%
IVC/AD	100%	0%	0%	0%	0%

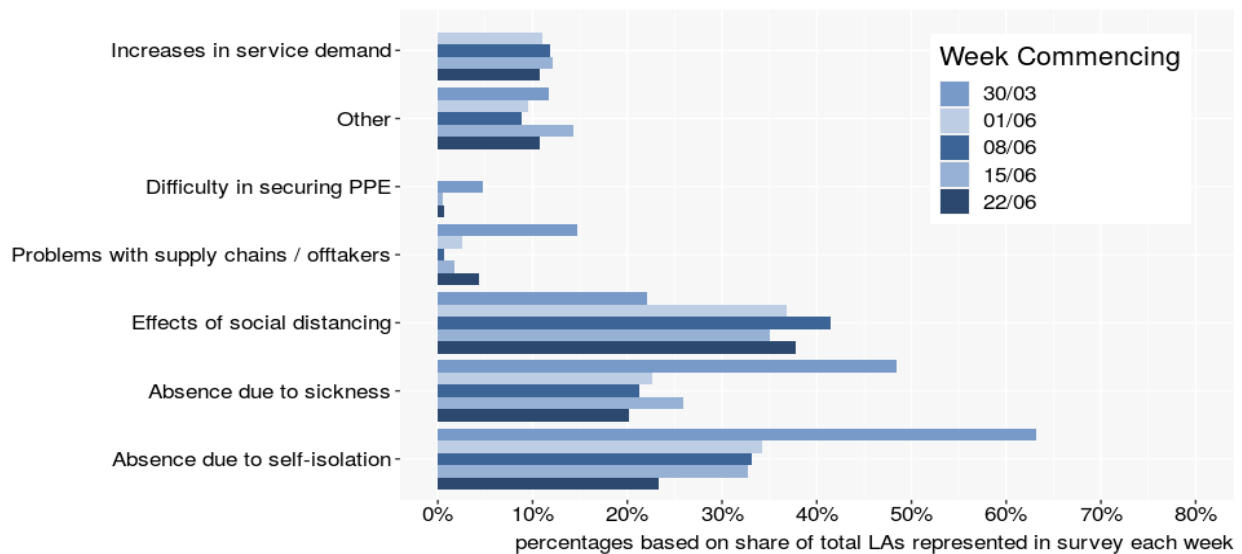
Staff Absence Levels



- In the W/C 22nd June 2020, **21%** of LAs reported experiencing 'no impact' on operational staffing levels. This figure is five times greater than that reported in the W/C 30th March, and greater than in the last survey (W/C 15th June)
- **73%** of LAs reported a 'less than 20% reduction' on staffing levels, a little bit lower percentage than the week before.
- **4%** of LAs reported a '20-40% reduction' on staffing levels in the W/C 22nd June. Instances of the worst levels of disruption for staffing levels have continued to fall since the W/C 30th March.

Reasons for Service Changes

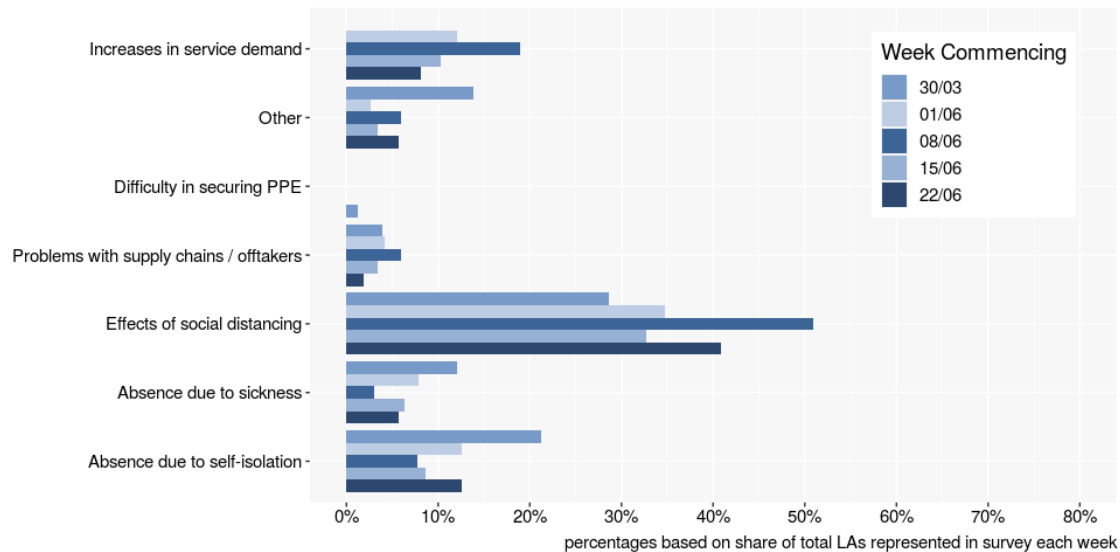
Collection



Percentages may sum to greater than 100%, as responding LAs can state more than one reason

- In the W/C 22nd June, the greatest reported cause for disruption to collection services by responding LAs, where this is arising, is the **effects of social distancing**, highlighted by **38%** of LAs. This was followed by **absence due to self-isolation** as the second greatest reported cause for disruption, which was identified by **23%** of responding LAs in the W/C 22nd June.
- **Absence due to sickness** is reported to be a cause for disruption to collection services by **20%** of LAs, a smaller percentage than in our previous week's survey.
- Similar to previous weeks, roughly one in nine (**11%**) LAs responding to our survey in the W/C 22nd June continue to highlight **major increases in demand for services** as a cause for disruption to collection services.
- **Problems with offtakers** were identified by **4%** of LAs as a cause for disruption, with this figure having fallen incrementally each week. For those experiencing problems with offtakers, who made further comment, the material stream impacted was plastics.
- **'Other reasons'** for disruption were highlighted by **11%** of LAs. These include certain services not being fully functional, and changes in collection services affecting quality of waste.
- **Difficulty securing PPE'** was highlighted by **1%** of LAs as a cause for disruption in the W/C 22nd June.

Disposal



Percentages may sum to greater than 100%, as responding LAs can state more than one reason

- The **effects of social distancing** continue to be the greatest reported cause of disruption to disposal services among responding LAs, reported by **41%** in the W/C 22nd June.
- **Staff absences due to self-isolation** is the second highest reported cause of disruption to disposal services, reported by **13%** of responding LAs in the W/C 22nd June.
- **Major increases in service demand**, the next greatest reported reason, has been highlighted by **8%** of responding LAs as a cause for disruption. This figure is slightly lower than that reported in the W/C 15th June.
- **Staff absences due to sickness** has been highlighted by **6%** of responding LAs as a cause for disruption.
- **Other reasons** were highlighted by **6%** of LAs.
- **Problems with supply chains/offtakers** were highlighted by **2%** of respondents in the W/C 22nd June. For those experiencing supply chain problems at the disposal stage, the waste streams impacted are co-mingled materials (cans/plastics/fibre and glass) and (cans/plastics and fibre). The main reason reported for this issue was limitations on volumes of waste being accepted, with LAs mainly being unable to place 'under 15% of materials', difficulty in meeting input quality specifications was also mentioned.

Changes in Waste Arisings

(Excluding Withdrawn Services)

	+100% increase	50-100% increase	20-50% increase	0-20% increase	No impact	0-20% decrease	20-50% decrease	50-100% decrease
Residual	1%	1%	22%	56%	19%	1%	0%	1%
Recycling	2%	1%	32%	48%	16%	0%	0%	1%
Food	1%	1%	6%	55%	14%	22%	0%	1%
Garden	5%	4%	15%	41%	22%	11%	3%	0%
Clinical	0%	0%	0%	9%	89%	0%	2%	0%
Commercial Waste	0%	1%	0%	0%	14%	31%	40%	13%
Bulky	1%	0%	7%	17%	46%	26%	1%	1%
Bring Banks	2%	6%	7%	34%	40%	3%	4%	3%
Fly-Tip Clearance	1%	8%	9%	41%	31%	8%	1%	1%
Street Sweepings/ Litter	0%	2%	4%	19%	56%	17%	2%	1%
HWRCs	0%	0%	17%	26%	16%	21%	16%	5%

- **Residual:** **80%** of LAs represented in our survey in the W/C 22nd June report higher than usual residual waste arisings. **56%** reported increases to be in the region of '0-20% greater than normal', **22%** reported increases to be in the region of '20-50% greater than usual', **1%** reported waste arising levels to be '50-100% 'greater than usual, and **1%** reported increases of over 100%.
- **Recycling:** The vast majority (**83%**) of LAs responding to our survey in the W/C 22nd June reported recycling waste arisings to be greater than usual, with over half of those LAs reporting increases to be in the region of '0-20%'.
- Higher than usual arisings of collected **food** and **garden waste** are reported by **63%** and **65%** of LAs, respectively. Over a fifth (**22%**) report arisings to be about the same for garden waste, whereas **14%** report that for food waste
- **Almost half (46%)** of LAs report **bulky waste** collection tonnages to be 'about the same' this week, with **25%** reporting collected tonnages to be greater than usual, while **28%** report less than usual collected tonnages.

- **The vast majority (89%)** of LAs continue to report collected **clinical waste** arisings to be at a similar level to what is typical.
- Almost half of authorities (**49%**) reported a greater than usual level of collected waste from **bring banks**.
- **Fly-tip clearance:** Around three in five responding LAs (**59%**) report greater than usual volumes of collected fly-tipped waste, which is higher than the two previous weeks. **41%** report increases to be in the region of '0-20%' and **9%** '20-50%'. Just under a third (**31%**) of respondents reported collected tonnages were as typical.
- **Commercial:** **84%** of respondents highlighted a reduction in collected commercial waste arisings relative to usual. This is a smaller percentage than the previous week.
- **Street sweepings/Litter:** Over half of respondents (**56%**) report arisings to be at a similar level to what is typical, with another **20%** reporting tonnages being lower than normal, with a '0 – 20%' decrease being the largest percentage decrease.
- **HWRCs:** Only **16%** of responding LAs report collected tonnages at their HWRCs to be typical. Around four in ten responding LAs (**41%**) report a reduction in collected tonnages, with a '0-20%' reduction being the largest reduction reported.