



Department
for Environment
Food & Rural Affairs



ADEPT

Woodland Creation Accelerator Fund Conference

Wednesday 3rd July, 2024



Agenda

10:00	Welcome
10:05	Overview of WCAF and its impact
10:15	Look back & opportunities
11:10	Break
11:30	Inspiring Tree Planting Delivery and panel discussion
12:25	Intro to afternoon breakout sessions
12:35	Lunch
13:30	Breakout sessions
14:40	Practical delivery drop-in sessions
15:45	Summary & close

Overview of the Woodland Creation Accelerator Fund



Overview of the Woodland Creation Accelerator Fund and its impact

Karen Farquharson



Forestry Commission

ADEPT

Association of Directors of
Environment, Economy, Planning & Transport

Decision Equipped.

proving

Key Findings

1. Overall, a very successful initiative. Feedback from the participating authorities regarding the WCAF initiative has been extremely positive. The recognition of the skills and capacity gap, addressed through a revenue grant, is appreciated and considered of huge value to the respective authorities.
2. 112 roles have been recruited since the launch of the WCAF.
3. In total. 1.75 million trees have been confirmed as planted as a result of the WCAF fund. A further 1.80 million trees are forecast to be planted during 2024/25.

Range of Roles

- Woodland Creation / Development Officer
- Community Tree & Woodland Opportunity Office
- Ecologist
- Agricultural surveyor
- Natural Environment and Fundraising Officer
- Woodland Creation Accelerator Officer
- Trees and Woodland Engagement Officer
- Plan Tree Partnership Officer
- Plan Tree Project Officer
- WCAF Projects Officer
- Assistant Ecologist & Landscape Officer
- Landscape Architect
- Tree & Woodland Development Officer
- I-Tree Eco Survey and Report
- Project Support Officer
- Woodland Creation Historic Environment Office
- Woodland Expansion Officer
- Consultancy Support (various)
- Woodland Creation GIS Officer
- Woodland Creation Community Liaison Office
- Assistant Forestry & Arboriculture officer
- Area Landscape Manager
- Woodland Development
- Historic Environment Record (HER) Assistant-Woodland Creation
- Green and Healthy City Engagement
- Tree Planting Volunteer Coordinator
- Woodland Ranger WCAF

WCAF Challenges

1. Over two thirds of the authorities reported that total planting numbers will be below those forecasted in their WCAF bid document.
2. Authorities reported very similar challenges in realising their planting objectives. These included:
 - The ‘very wet’ weather over the autumn and winter.
 - Finding suitable land and /or persuading the owner to undertake a planting project.
 - **Competing needs for land, e.g. biodiversity schemes and solar farms.**
 - **Planning constraints.**
 - Delays in funding such as the Local Authority Treescapes Fund (LATF).
 - Competing funds such as the England Woodland Creation Offer (EWCO).
 - Staffing pressures and constraints within the teams that support the WCAF role.
 - Delays and challenges in recruitment.
 - Internal delays within the authority.
 - **Including communication and publicity initiatives.**
 - **Collaboration and co-ordination time and resource requirements, e.g. Schools, Parish and Town Councils.**

Progress, Acceleration and Benefits

- Increased identification of woodland creation opportunities and sites.
- Improved planning and site evaluation.
- Accelerated planting.
- Improved tree survival rates.
 - Caging, watering and pruning activities.
- Better stakeholder liaison and collaboration.
 - Improved landowner engagement and agreement.
 - Focus on specific community projects.
 - Establishment of more sustainable relationships.
- Improved public communications.
 - Raised the profile of the 'tree agenda'.
 - Improved social media awareness campaigns.
- Improved volunteer coordination and management.
- Improved additional funding application and success.
 - E.g., Urban Tree Challenge Fund (UTCF), LATF, MoreWoods, EWCO

Source of Funding

Type	No of Auth %
Local Authority Treescape Fund (LATF)	40
Urban Tree Challenge Fund (UTCf)	31
Council Budget	44
England Woodland Creation Offer (EWCO)	14
Trees for Climate (TfC)	38
Donations	18

- Other sources include: Tree Council’s Network Rail Community Tree Planting Fund, Woodland Trust’s Grow Back Greener Funding, Kings Coronation Living Heritage Fund (CLHF), Charities , Northern Forest, CIL / S.106, Farming in Protected Landscapes (FiPL), The Tree Council Funds, Grow Back Greener ‘Northern Forest Fund’ via the White Rose Forest Community Forest Partnership, White Rose Forest Partnership, NHS Funded, Trees for Cities, Woodland Trust/BNG/Northern Forest, National Forest CLS scheme, Wiltshire Council Planning CIL payments, Trowbridge Bat Mitigation Strategy), Tree Council Golden, Landfill Communities Fund Orchard and Trees Call For Action.

Physical Planting

Type	No of Auth %
Council Staff	63
Corporate Volunteers	52
Community Groups	70
Contractors	50
Volunteers	67
School / Young people groups	65
Others included: Farmers, residents and landowners	

Post - WCAF

- Overall, authorities are planning to build on the relationships, planting initiatives and progress realised through WCAF.
- Based on the success of the WCAF, several authorities are seeking to build the case for a similar permanent position.



Forestry Commission

ADEPT

Association of Directors of
Environment, Economy, Planning & Transport

Decision Equipped.

proving

End of Presentation

Look back and opportunities





Sharing learnings from: LOCAL AUTHORITY WOODLAND CREATION

Woodland Creation Accelerator Conference
Birmingham, 3rd July 2024
David Johnson, Naomi Proudlove
Climate Response Team, Buckinghamshire Council



Background

THE BUCKS TREE MISSION

Plant 543,000 trees by 2031:
one for every citizen

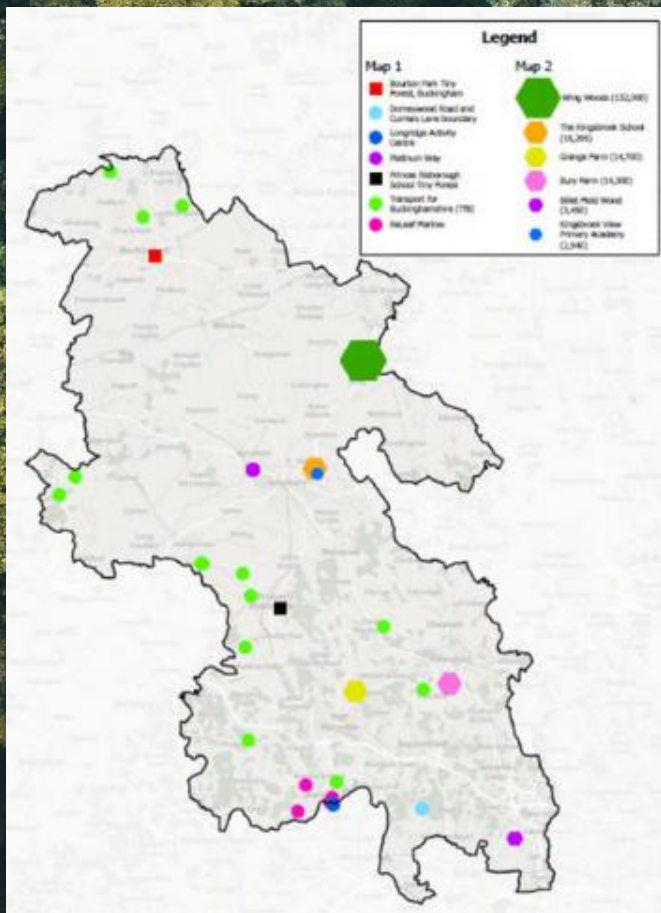
Funding & inception of the
Programme

Climate Change & Air
Quality Strategy

**Achieve net zero carbon
emissions by 2050**

Carbon credits to achieve our
targets

PROGRAMME OVERVIEW



OVER 192,000 TREES PLANTED
SO FAR.....



LATF x 3 rounds
partnerships with:

- environmental groups
- parish councils
- town councils
- schools
- Bucks Highways
- Earthwatch (7 Tiny Forests)



Planting through
woodland in new schools



Woodland creation on
council-owned land



Billet Field Wood
2021-22



Grange Farm Wood
2022-23



Bury Farm Wood
2022-23



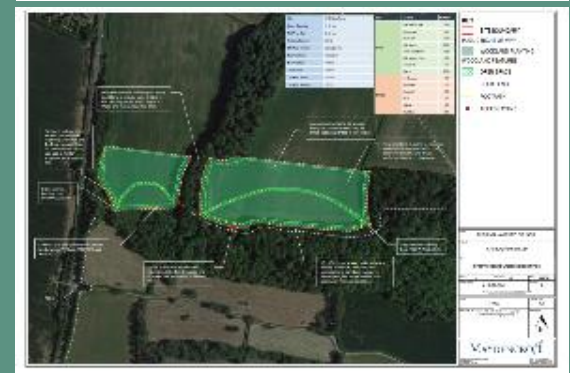
Wing Wood
2023-24

**NEW
WOODLAND
CREATED TO
DATE**

DELIVERY MODEL:

Contractor Based Model

- **Billet Field Wood:** 3,450 trees on 1.72 ha site
- **Grange Farm Wood:** 14,700 trees on 7.2ha site
- **Bury Farm Wood:** 14,300 trees on 7ha site



Forestry England Woodland Partnership

Wing Wood

- 51ha site
- 132,000 trees planted 2023/24
- New, accessible green space for residents
- Valuable new habitat
- Sustainable source of timber
- 25 species planted over 32ha, including 18 native broadleaf species
- Community orchard with 67 local heritage fruit tree varieties
- Community planting day
- Stakeholder group to address and channel information relating to the wood





WOODLAND
IN PROGRESS FOR
24/25 PLANTING



5 new woodland sites



WCPG planning process



EWCO delivery model

KEY LEARNINGS & ADVICE

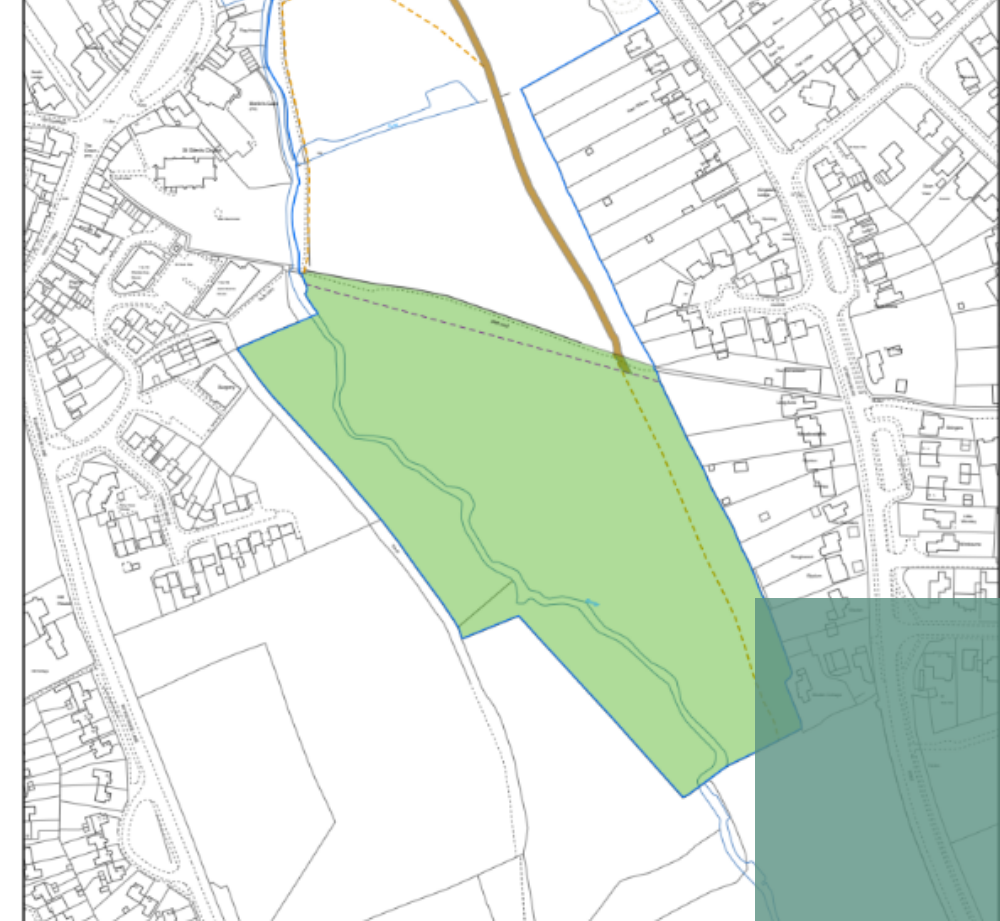
- 🌳 FC Officer = No.1 Buddy
- 🌳 Ground Truthing
- 🌳 Be Clear on Objectives
- 🌳 Keep your Options Open
- 🌳 Constraints as Opportunities
- 🌳 Keep Refining
- 🌳 Decision-Makers Digging!
- 🌳 Remember the Bigger Picture



FC OFFICER
= No.1 BUDDY

GET OUT ON SITE





GROUND TRUTHING



BE CLEAR ON YOUR OBJECTIVES



KEEP YOUR
OPTIONS OPEN



CONSTRAINTS AS OPPORTUNITIES



- Is an overhead cable a constraint or an opportunity to plant some low level hazel for coppicing?
- Is that archaeology finding a hindrance or a part of our heritage to celebrate within the woodland design?



- Is wetland an obstacle or a chance to improve resilience to flooding and adapt to/mitigate climate change?



KEEP LEARNING & REFINING

Keep an open mind, regularly review and capture any learnings to build into future planting.



GET DECISION- MAKERS DIGGING!

A photograph of a forest with tall, thin trees. The image is overlaid with a semi-transparent green rectangle. The text is positioned on the left side of the green overlay.

HAVE ROBUST PROJECT MANAGEMENT

Use a recognized approach, what is available internally?

Project initiation/start: Work out your scope, budget and schedule.

Project Board: Keep an eye on the strategic direction and act as internal “sponsors” to clear obstacles and keep things on track.



REMEMBER THE BIGGER PICTURE

"TIME SPENT AMONGST TREES IS NEVER WASTED TIME" Katrina Mayer

WHAT HUMANS DO OVER THE NEXT 50 YEARS WILL DETERMINE THE FATE OF
ALL LIFE ON THE PLANET" Sir David Attenborough



THANK YOU!

naomi.proudlove@buckinghamshire.gov.uk
climatechange@buckinghamshire.gov.uk

Planting Our Future

Solihull

Creating a sustainable tomorrow

Jo Williams

Community Engagement Officer, Forestry Services





What is Planting our Future?



SOLIHULL COUNCIL LAUNCHED THE PLANTING OUR FUTURE CAMPAIGN IN 2020.



COMMITMENT TO PLANT 250,000 TREES BY 2030.



ENGAGING WITH SCHOOLS, RESIDENTS, BUSINESSES, AND COMMUNITY GROUPS.



Solihull
METROPOLITAN
BOROUGH COUNCIL



What does Planting our Future do?



ENGAGE WITH PRIVATE LANDOWNERS TO IDENTIFY OPPORTUNITIES FOR TREE AND HEDGEROW PLANTING.



PLANT TREES/WOODLAND ON COUNCIL OWNED LAND (WHERE APPROPRIATE) INCLUDING SCHOOL LAND, AND HIGHWAYS.



SUPPORT SCHOOLS AND EDUCATIONAL FACILITIES WITH HEDGEROW HABITATS AND ORCHARDS.





Business Engagement



EMPLOYEE
VOLUNTEERING
HAS NUMEROUS
BENEFITS, BOTH FOR
THE INDIVIDUALS
INVOLVED AND FOR
THE ORGANISATIONS
THEY REPRESENT



SPONSORSHIP
AN OFFER FOR
BUSINESSES OF ALL
SHAPES AND SIZES.



SOCIAL VALUE
HELPING BUSINESSES
QUANTIFY THEIR
CONTRIBUTIONS TO
ENVIRONMENTAL
SUSTAINABILITY, AND
ACCOUNTABLE
SOCIAL IMPACT.





**Tree Planting
Information Pack**

Planting Our Future
Solihull



Planting Our Future

Solihull

Thank you for listening



Planting Our Future

Solihull



Solihull

METROPOLITAN
BOROUGH COUNCIL