

Survey Results - Week Commencing 6th July 2020

- * Results are based on a sample of LAs taken in the W/C 6th July 2020. The sample size varies each survey and these results should be used as a general indication of levels and trends.
- * Responses represent best reasonable estimates at the date and time the survey is completed, and for some Local Authorities (LAs), may be reported with a week's lag.
- * Although this document is not in itself an official statistics release, it and the indicators within it, have undergone a proportionate level of quality assurance.
- * Percentages throughout this document may not sum to totals due to rounding

Collection Services



*Axis dates given as 'week commencing...'

- **Residual waste:** The vast majority (**94%**) of Waste Collection Authorities/Unitary Authorities (WCAs/UAs) responding to our survey in the W/C 6th July 2020 and who provide residual waste collections, report these to be operating as normal. Most of the remainder reported experiencing minor disruption.

- **Recycling:** Four in five (80%) recycling collections are reported to be operating as normal in the W/C 6th July, while minor disruption is reported by 18% of responding authorities, with just 2% reporting moderate disruption.
- **Food waste:** Three in four (75%) of LAs responding to our survey in the W/C 6th July who provide food waste collections, report these to be operating as normal. 24% of responding authorities continue to report minor disruptions, with just 1% of responding authorities reporting that the service is currently not available.
- **Garden waste:** 85% of garden waste collection services are reported to be operating as normal in the W/C 6th July, with this figure higher than the previous two weeks. A further 14% report garden waste collection services to have minor disruptions.
- **Clinical waste:** Almost all (98%) clinical waste collections (generally ran in over four fifths of LAs represented in this survey) are reported to be continuing to operate as normal.
- **Commercial waste:** 69% of LAs responding to our survey in the W/C 6th July report commercial collection services to be operating normally, an increase on the previous week, with another 12% reporting operating with moderate disruption and a further 16% operating with severe disruptions.
- **Bulky collections:** The overall situation for bulky collections has improved incrementally since the end of March. 1% of bulky collections are reported to be unavailable in the W/C 6th July. The percentage of collections reported to be operating normally is 74% in the W/C 6th July, an increase from W/C 22nd June.
- **Street sweepings:** Almost four in five (79%) street-sweeping and litter collection services provided by responding LAs are reported to be operating normally. 14% are reported to be experiencing minor disruption, and 6% are experiencing moderate disruption.
- **78% of bring banks** are reported to be operating normally in the W/C 6th July by responding LAs. 14% report this service to be experiencing minor disruption and 5%, moderate disruption. 1% report this service to be not available.
- The vast majority (90%) of **fly-tipping clearance** collections are reported to be operating as normal in the W/C 6th July. 9% are reported to be in operation but with minor disruption.

	Operating normally	Minor disruption	Moderate disruption	Severe disruption	Service not available
Residual	94%	4%	2%	0%	0%
Recycling	80%	18%	2%	0%	0%

Food	75%	24%	0%	0%	1%
Garden	85%	14%	1%	0%	0%
Clinical	98%	2%	0%	0%	0%
Commercial	69%	3%	12%	16%	0%
Bulky	74%	19%	6%	0%	1%
Bring Banks	78%	14%	5%	2%	1%
Fly-Tip Clearance	90%	9%	1%	0%	0%
Street Sweeping	79%	14%	6%	0%	1%

Disposal Services

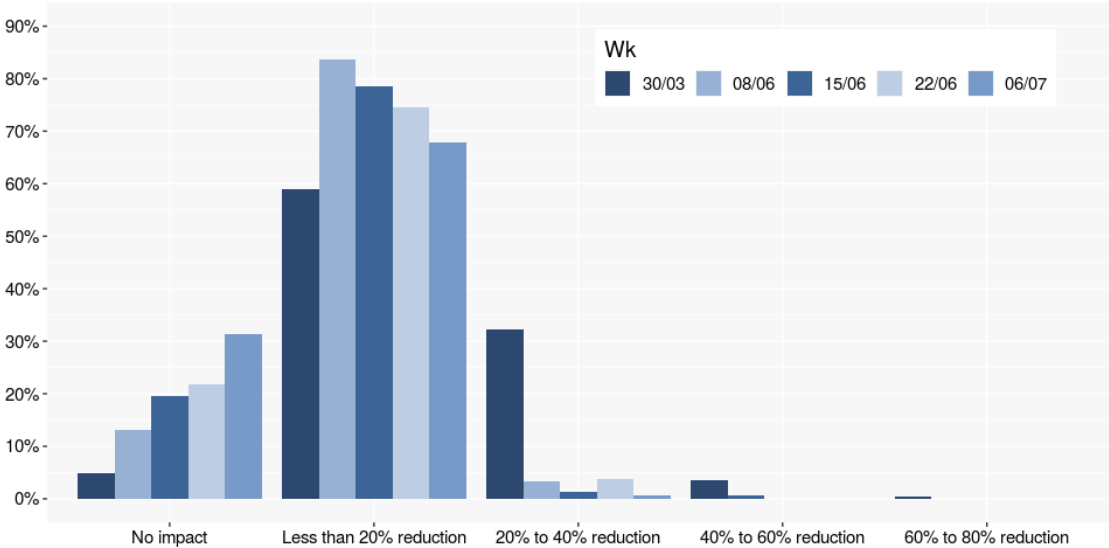


- Nearly all landfilling and Energy from Waste (EfW) disposal services utilised by LAs responding to our survey are reported to be operating as normal in the W/C 6th July 2020. This has been a relatively constant picture since the W/C 30th March.
- **Material Recycling Facilities (MRFs):** Greater levels of disruption have been consistently reported for recycling disposal services than residual by survey respondents, and this trend continues to be the case in the W/C 6th July. The majority of (85%) MRF services used by LAs responding to our survey are reported to be operating as normal, while 10% are reported to be operating but with minor disruption.
- **Transfer stations:** As in previous weeks, most transfer stations (92%) are reported to be continuing to operate without any disruption by LAs responding to our survey in the W/C 6th July.
- **Household Waste Recycling Centres (HWRCs):** In the W/C 6th July, 31% of HWRCs that are in operation are operating normally, with 67% of responding LAs reporting minor or moderate levels of disruption.

- **Mechanical Biological Treatment (MBT):** MBT services are reported to be in normal operation for all (**100%**) of the relatively small proportion of responding authorities where this is a disposal service (a fifth of responding LAs).
- **Open Windrow Composting (OWC):** OWC services are reported to be operating as normal by **100%** of responding LAs this week.
- Almost all (**96%**) **In-Vessel Composting (IVC)** and **Anaerobic Digestion (AD)** services are reported to be operating as normal by LAs responding to our survey in the W/C 6th July, with the rest operating with minor disruptions.

	Operating normally	Minor disruption	Moderate disruption	Severe disruption	Service not available
Landfill	100%	0%	0%	0%	0%
EFW	96%	4%	0%	0%	0%
MRF	85%	10%	5%	0%	0%
HWRC	31%	54%	13%	3%	0%
Transfer Stations	92%	7%	1%	0%	0%
MBT	100%	0%	0%	0%	0%
OWC	100%	0%	0%	0%	0%
IVC/AD	96%	4%	0%	0%	0%

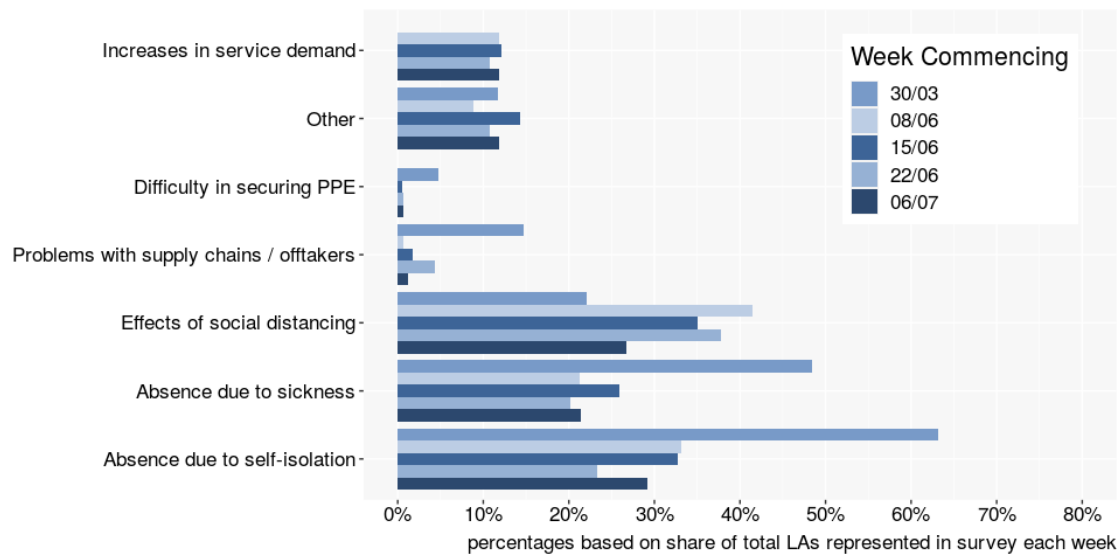
Staff Absence Levels



- In the W/C 6th July 2020, **31%** of LAs reported experiencing 'no impact' on operational staffing levels. This figure is almost eight times greater than that reported in the W/C 30th March, and greater than in the last survey (W/C 22nd June)
- **68%** of LAs reported a 'less than 20% reduction' on staffing levels, a little bit lower percentage than the in the previous survey.
- **1%** of LAs reported a '20-40% reduction' on staffing levels in the W/C 6th July. Instances of the worst levels of disruption for staffing levels have continued to fall since the W/C 30th March.

Reasons for Service Changes

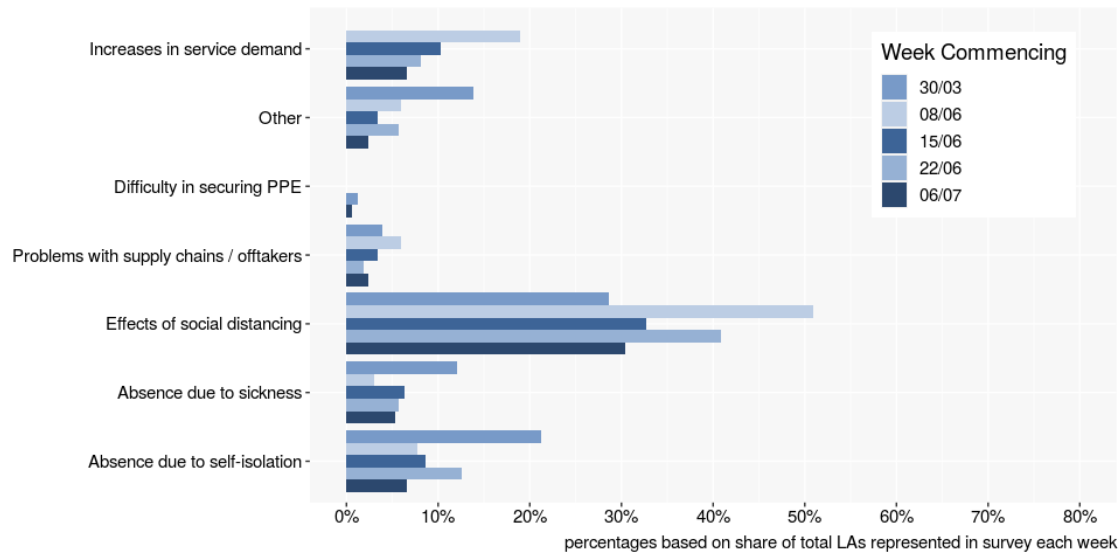
Collection



Percentages may sum to greater than 100%, as responding LAs can state more than one reason

- In the W/C 6th July, the greatest reported cause for disruption to collection services by responding LAs, where this is arising, is **absence due to self-isolation**, highlighted by **29%** of LAs. This was followed by the **effects of social distancing** as the second greatest reported cause for disruption, which was identified by **27%** of responding LAs in the W/C 6th July.
- **Absence due to sickness** is reported to be a cause for disruption to collection services by **21%** of LAs, a smaller percentage to our previous survey.
- Similar to previous weeks, roughly one in eight (**12%**) LAs responding to our survey in the W/C 6th July continue to highlight **major increases in demand for services** as a cause for disruption to collection services.
- **Problems with offtakers** were identified by **1%** of LAs as a cause for disruption, with this figure having fallen incrementally each week. For those experiencing problems with offtakers, who made further comment, the material stream impacted was comingled materials (cans/plastic/fibre/glass). The main reason reported for this issue was limitations on volumes of waste being accepted, with LAs mainly being unable to place 'under 15% of materials.'
- **'Other reasons'** for disruption were highlighted by **12%** of LAs. Awaiting revised HWRC guidance on moving from 2m to 1m+ is mentioned by several LAs.
- **Difficulty securing PPE'** was highlighted by **1%** of LAs as a cause for disruption in the W/C 6th July.

Disposal



Percentages may sum to greater than 100%, as responding LAs can state more than one reason

- The **effects of social distancing** continue to be the greatest reported cause of disruption to disposal services among responding LAs, reported by **30%** in the W/C 6th July.
- **Staff absences due to self-isolation** and **Major increases in service demand** are the next highest reported causes of disruption to disposal services, reported by **7%** respectively of responding LAs in the W/C 6th July.
- **Staff absences due to sickness** has been highlighted by **5%** of responding LAs as a cause for disruption.
- **Other reasons** were highlighted by **2%** of LAs.
- **Problems with supply chains/offtakers** were highlighted by **2%** of respondents in the W/C 6th July. For those experiencing supply chain problems at the disposal stage, the waste streams impacted are co-mingled materials (cans/plastics/fibre and glass) and (cans/plastics and fibre). The main reason reported for this issue was limitations on volumes of waste being accepted, with both LAs being unable to place 'under 15% of materials', and 'over 75% of materials' being mentioned.

Changes in Waste Arisings

(Excluding Withdrawn Services)

	+100% increase	50-100% increase	20-50% increase	0-20% increase	No impact	0-20% decrease	20-50% decrease	50-100% decrease
Residual	1%	4%	10%	63%	21%	1%	0%	0%
Recycling	1%	7%	31%	46%	13%	1%	0%	0%
Food	0%	2%	7%	48%	21%	21%	1%	1%
Garden	0%	3%	17%	45%	28%	3%	3%	1%
Clinical	0%	0%	0%	9%	90%	0%	1%	0%
Commercial Waste	0%	6%	2%	6%	12%	39%	31%	4%
Bulky	1%	1%	11%	21%	52%	13%	1%	0%
Bring Banks	0%	4%	3%	40%	43%	5%	0%	4%
Fly-Tip Clearance	0%	6%	16%	34%	37%	6%	1%	1%
Street Sweepings/ Litter	1%	1%	8%	20%	59%	11%	0%	0%
HWRCs	0%	0%	17%	17%	24%	13%	25%	5%

- **Residual:** **78%** of LAs represented in our survey in the W/C 6th July report higher than usual residual waste arisings. **63%** reported increases to be in the region of '0-20% greater than normal', **10%** reported increases to be in the region of '20-50% greater than usual', **4%** reported waste arising levels to be '50-100% 'greater than usual, and **1%** reported increases of over 100%.
- **Recycling:** The vast majority (**85%**) of LAs responding to our survey in the W/C 6th July reported recycling waste arisings to be greater than usual, with over half of those LAs reporting increases to be in the region of '0-20%'.
- Higher than usual arisings of collected **food** and **garden waste** are reported by **57%** and **65%** of LAs, respectively. Over a fifth (**21%**) report arisings to be about the same for food waste, whereas **28%** report that for garden waste
- **Over half (52%)** of LAs report **bulky waste** collection tonnages to be 'about the same' this week, with **34%** reporting collected tonnages to be greater than usual, while **14%** report less than usual collected tonnages.

- **The vast majority (90%)** of LAs continue to report collected **clinical waste** arisings to be at a similar level to what is typical.
- Almost half of authorities (**47%**) reported a greater than usual level of collected waste from **bring banks**, with **43%** reporting waste arisings to be at a typical level.
- **Fly-tip clearance:** Over half of responding LAs (**56%**) report greater than usual volumes of collected fly-tipped waste, which is lower than in the previous survey. **34%** report increases to be in the region of '0-20%' and **16%** '20-50%'. **37%** of respondents reported collected tonnages were typical.
- **Commercial:** **74%** of respondents highlighted a reduction in collected commercial waste arisings relative to usual. This is a smaller percentage than the previous survey.
- **Street sweepings/Litter:** Almost three in five respondents (**59%**) report arisings to be at a similar level to what is typical, with another **30%** reporting tonnages being higher than normal, with a '0 – 20%' decrease being the largest percentage increase.
- **HWRCs:** Only **24%** of responding LAs report collected tonnages at their HWRCs to be typical. Around four in ten responding LAs (**43%**) report a reduction in collected tonnages, with a '20-50%' reduction being the largest reduction reported.